

Captovation® Scan

FEATURES:

- *Unlimited Scanning—
NO Volume Restrictions*
- *Bar Code/Patch Code Recognition*
- *On-the-fly Image Processing*
- *Native-ISIS® Support*
- *Kofax Adrenaline® and VRS® Support*
- *Image Thumbnails*
- *Black and White, Grayscale or Color*
- *Endorsing/Imprinting*
- *Import Images from Disk*
- *Customizable (VBA-Compatible)*

PRODUCTION-LEVEL SCANNING

Let Your Paper Volumes Grow

With **Captovation Scan**, you get unlimited scanning out-of-the-box. You will never have to worry about exceeding a monthly or annual allotment of scans due to volume restrictions. As a result, **Captovation Scan** won't shut down during times of peak scan volumes.

Choose Your Scanning Interface

To provide support for the industry leading document scanning interfaces, **Captovation Scan** comes in two versions:

- **Captovation Scan for ISIS**
 - *Optimized for use with ISIS drivers*
- **Captovation Scan for Adrenaline**
 - *Optimized for use with Kofax Adrenaline/VRS interfaces*

Quality Assurance

Captovation Scan provides image thumbnail support while reviewing batches. Thumbnails enable the scan operator to quickly review the quality of all images within a batch. Furthermore, thumbnails support drag-and-drop functionality allowing pages to be quickly reordered. Additionally, scan operators can easily append, insert, replace and delete pages within a batch.

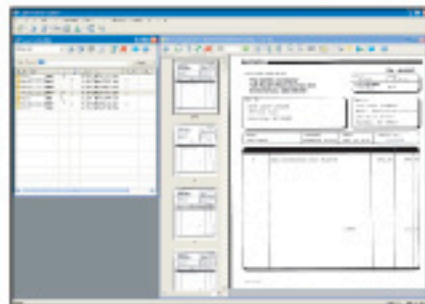


Scanner Support

Captovation Scan supports more than 250 document scanners from manufacturers such as: Bøwe Bell+Howell, Canon, Fujitsu, Inotec, Kodak, Panasonic, Ricoh, Visioneer, Xerox, and others.



Captovation Scan also supports Kofax VRS (Virtual Re-Scan) technology. VRS technology provides you with advanced image processing features and automatically checks for adjustment, contrast and image clarity at scan time.



Captovation Scan User Interface

Document Capture Made Easy

Captovation Scan profiles minimize scan operator training and errors by allowing complex scanner and image processing settings to be pre-configured based on the documents and applications supported. Scan operators simply select a profile and begin scanning.

Black and White Image Processing Features

- *Deskew*
- *Despeckle*
- *Patch Code Detection*
- *Black Border Removal*
- *Blank Page Removal*
- *Cropping*
- *Invert Images*
- *Character Smoothing*
- *Remove Punch Holes*
- *And many more features...*

Image Processing features vary between Captovation Scan for ISIS and Captovation Scan for Adrenaline

Established in 1994, Captovation, Inc. specializes in the design and development of document and check capture products for the electronic document management industry. Our software products and custom integration services provide paper-intensive organizations the ability to streamline and tailor the document capture process to meet their needs.

Other Captovation Capture Products:

- *Index (production-level indexing)*
- *Web Capture (distributed, web-based capture)*
- *Check Capture (check image and MICR capture)*
- *Recognition Server (automated document indexing)*
- *Import Server (universal document importing)*
- *Commit Server (efficient and reliable archiving)*

For information about
Captovation Capture products
please contact us:
sales@captovation.com
952-835-1500

5275 Edina Industrial Blvd., Suite 220
Minneapolis, Minnesota 55439 USA
Phone: 952-835-1500 | Fax: 952-835-2250
www.captovation.com | sales@captovation.com

Captovation
incorporated